

# **SOUTH GLOUCESTERSHIRE COUNCIL**

## **(FROM VALE AREA - SOUTH GLOUCESTERSHIRE) (PROHIBITION AND RESTRICTION OF WAITING) (CONSOLIDATION) (VARIATION NO. 7) ORDER 2014**

The South Gloucestershire District Council (hereinafter referred to as "the Council") in exercise of its powers under sections 1(1), 2(1) to (3), 4(2) of and Part IV of Schedule 9 to the Road Traffic Regulation Act 1984 as amended (hereinafter referred to as "the Act of 1984") and of all other enabling powers, after consultation with the chief officer of police in accordance with Part III of Schedule 9 to the Act of 1984, hereby makes the following order:-

1. This order shall come into operation on the 2 June 2014 and may be cited as the South Gloucestershire Council (Frome Vale Area - South Gloucestershire) (Prohibition and Restriction of Waiting) (Consolidation) (Variation No. 7) Order 2014.
2. The South Gloucestershire Council (Frome Vale Area - South Gloucestershire) (Prohibition and Restriction of Waiting) (Consolidation) Order 2007 as varied by the South Gloucestershire Council (Civil Parking Enforcement) (Prohibition and Restriction of Waiting) (Off Street Parking Places) (Bus Lanes) Minor Order 2008, the South Gloucestershire Council (Frome Vale Area - South Gloucestershire) (Prohibition and Restriction of Waiting) (Consolidation) (Variation No. 1) Order 2009, the South Gloucestershire Council (Frome Vale Area - South Gloucestershire) (Prohibition and Restriction of Waiting) (Consolidation) (Variation No. 3) Order 2009, the South Gloucestershire Council (Various Roads, Badminton Road Area, Yate) (Variation of Waiting Restrictions) Order 2010, the South Gloucestershire Council (Frome Vale Area South Gloucestershire) (Prohibition and Restriction of Waiting) (Consolidation) (Variation No. 2) Order 2010, the South Gloucestershire Council (Frome Vale Area - South Gloucestershire) (Prohibition and Restriction of Waiting) (Consolidation) (Variation No. 5) Order 2011, the South Gloucestershire Council (Frome Vale Area - South Gloucestershire) (Prohibition and Restriction of Waiting) (Consolidation) (Variation No. 4) Order 2011 and the South Gloucestershire Council (Frome Vale Area - South Gloucestershire) (Prohibition and Restriction of Waiting) (Consolidation) (Variation No. 6) Order 2011, the South Gloucestershire Council (Broad Lane, Yate) (Prohibition of Waiting) (Protection of School Entrances - No Stopping) (Variation) Order 2012 and the South Gloucestershire Council (Various Roads, Barnhill Road Area, Chipping Sodbury) (Prohibition and Restriction of Waiting) (Variation) Order 2013 is hereby varied further and shall have effect as though –
  - a) after Article 5 thereof there were inserted the following additional Article numbered 5A, namely:-
 

"5A. Save as provided in Article 8 and Article 9 of this order no person shall, except upon the direction or with the permission of a police constable in uniform or of a traffic warden or of a parking attendant, cause or permit any vehicle to wait between the hours of 9.00 a.m. and 11.00 a.m. on any day other than Saturday or Sunday in any of the lengths of road or on any of the sides of road specified in Schedule 3A to this order;"

### **AUTHORITY FOR SEALING**

Council Resolution Frome Vale Area From  
Committee minute 48 of 06/03/2014  
Initials AS

### **AUTHORITY FOR SEALING**

Council Resolution P.T. & SE  
Committee minute 64 of 30/01/2013  
Initials AS



- b) after Article 7B thereof there were inserted the following additional Articles numbered 7C and 7D, namely:-

"7C. Save as provided in Article 8 and Article 9 of this Order no person shall, except upon the direction or with the permission of a police constable in uniform or of a traffic warden or of a parking attendant, cause or permit any vehicle to wait between the hours of 9.00 a.m. and 5.00 p.m. on any day other than Saturday or Sunday in any of the lengths of road or on any of the sides of road specified in Schedule 5C to this Order:-

- (i) for a longer period than two hours; or
- (ii) if a period of less than four hours has elapsed since the termination during the said hours of the last period of waiting (if any) by that vehicle on the same length of road or side of road;

7D. Save as provided in Article 8 and Article 9 of this Order no person shall, except upon the direction or with the permission of a police constable in uniform or of a traffic warden or of a parking attendant, cause or permit any vehicle to wait between the hours of 9.00 a.m. and 5.00 p.m. on any day other than Saturday or Sunday in any of the lengths of road or on any of the sides of road specified in Schedule 5D to this Order:-

- (i) for a longer period than four hours; or
- (ii) if a period of less than four hours has elapsed since the termination during the said hours of the last period of waiting (if any) by that vehicle on the same length of road or side of road;"

- c) in paragraph (1) of Article 8 thereof after the words and number "or Article 5" and before the words and number "or Article 6" there were inserted the following words and number, namely:-

"or Article 5A";

- d) in paragraph (1) of Article 8 thereof after the words and number "or Article 7B" and before the words "of this order" there were inserted the following words and numbers, namely:-

"or Article 7C or Article 7D";

- e) in paragraph (2) of Article 8 thereof after the words and number "or Article 5" and before the words and number "or Article 6" there were inserted the following words and number, namely:-

"or Article 5A";



- f) in paragraph (2) of Article 8 thereof after the words and number "or Article 7B" and before the words "of this order" there were inserted the following words and numbers, namely:-
- "or Article 7C or Article 7D";
- g) in paragraph (1) of Article 9 thereof after the words and number "or Article 5" and before the words and number "or Article 6" there were inserted the following words and number, namely:-
- "or Article 5A";
- h) in paragraph (2) of Article 9 thereof after the words and number "or Article 7B" and before the words "of this order" there were inserted the following words and numbers, namely:-
- "or Article 7C or Article 7D";
- i) in Article 11 thereof after the word and number "Article 4B" and before the words "of this order" there were inserted the following words and number, namely:-
- "and Article 7";
- j) in Article 11 thereof after the word and number "Schedule 2A" and before the words "of this order" there were inserted the following words and number, namely:-
- "and Part II of Schedule 5";
- k) in Schedule 1 thereto there were substituted for item lettered b) relating to **WESTLEIGH CLOSE**, Yate, east side the following alternative item b), namely:-
- "b) from a point 59 metres south of its junction with Station Road in a generally south easterly direction for a distance of 74 metres";
- l) in Schedule 1 thereto there were substituted for the items relating to **CULVERT AVENUE, EGGSHILL LANE, LAVENHAM ROAD, LAWRENCE DRIVE, MILLBROOK ROAD, UNNAMED ACCESS ROAD TO SGC BADMINTON ROAD OFFICES, WAVERLEY ROAD** and **WELLINGTON DRIVE** in Yate the items as set out in Schedule 1 to this order;
- m) in Schedule 1A thereto there were substituted for the item relating to **KENDALL CLOSE**, Yate the item as set out in Schedule 2 to this order;
- n) in Part I of Schedule 2A thereto there were inserted so as to maintain all items therein in alphabetical order of names of roads the following item relating to **LAWRENCE DRIVE**, Yate namely:-

**"LAWRENCE DRIVE, Yate**

east side - from a point 62 metres north of its junction with Millbrook Road in a northerly direction for a distance of 64 metres";

- o) in Part II of Schedule 2A thereto there were inserted so as to maintain all items therein in alphabetical order of names of roads the following item relating to **NORTH ROAD, Yate** namely:-


**"NORTH ROAD, Yate**

west side - from a point 7 metres north of its junction with Chapel Orchard in a northerly direction for a distance of 42 metres";

- p) after Schedule 3 and before Schedule 4 thereto there were inserted the additional Schedule numbered 3A as set out in Schedule 3 to this order;
- q) there were substituted for Schedule 5 thereto the alternative Schedule 5 as set out in Schedule 4 to this order; and
- r) after Schedule 5B thereto there were inserted the additional Schedules numbered 5C and 5D as set out in Schedule 5 to this order.

Given under the Common Seal of South Gloucestershire District Council the 30<sup>th</sup> day of April 2014.

THE COMMON SEAL of  
SOUTH GLOUCESTERSHIRE  
DISTRICT COUNCIL was hereunto  
affixed in the presence of:-

  
**Solicitor**





## SCHEDULE 1

### **CULVERT AVENUE, Yate**

- both sides - from its junction with A432 Badminton Road in a southerly direction for a distance of 35 metres
- west side - from a point 47 metres north of its junction with the Kendall Close/Woodward Avenue roundabout in a northerly direction for a distance of 16 metres

### **EGGSHILL LANE, Yate**

- east side - from its junction with Station Road in a southerly direction for a distance of 50 metres
- west side - from its junction with Station Road in a southerly direction for a distance of 10 metres

### **LAVENHAM ROAD, Yate north and eastern section**

- north and east side -
  - a) from its junction with Waverley Road in a north westerly direction for a distance of 39 metres
  - b) from a point 55 metres north west of its junction with Waverley Road in a generally westerly direction for a distance of 76 metres
  - c) from its junction with Lavenham Road (western section) in an easterly direction for a distance of 17 metres
- south and west side -
  - a) from its junction with Waverley Road in a north westerly direction for a distance of 119.6 metres
  - b) from its junction with Lavenham Road (western section) in an easterly direction for a distance of 29 metres

### **western section**

- east side -
  - a) from its junction with Waverley Road in a northerly direction for a distance of 28 metres
  - b) from a point 10 metres south of a point in line with the southern building line of Unit 26 Lavenham Road in a southerly direction for a distance of 28 metres
  - c) from a point 132.45 metres north of its junction with Waverley Road to a point 29 metres north of its junction with Lavenham Road (north and eastern section)
- west side - from its junction with Waverley Road in a northerly direction for a distance of 162.66 metres

**LAWRENCE DRIVE, Yate**

- both sides - a) from its junction with Millbrook Road in a northerly direction for a distance of 56 metres
- b) from its junction with Waverley Road in a southerly direction for a distance of 50 metres
- east side - from a point 104.5 metres south of its junction with Waverley Road in a southerly direction for a distance of 44 metres
- west side - a) from a point 104.5 metres south of its junction with Waverley Road in a southerly direction for a distance of 20 metres
- b) from a point 141.7 metres south of its junction with Waverley Road in a southerly direction for a distance of 15.8 metres
- c) from a point 167.5 metres south of its junction with Waverley Road in a southerly direction for a distance of 20 metres

**MILLBROOK ROAD, Yate**

- north side - a) from its junction with North Road in a westerly direction for a distance of 30.2 metres
- b) from a point 17 metres west of its junction with Lawrence Drive to a point 33.5 metres east of the junction with Wellington Drive
- c) from a point 10 metres east of the western building line of Unit C Millbrook Road in an easterly direction for a distance of 17 metres
- south side - a) from its junction with North Road in a westerly direction for a distance of 32 metres
- b) from a point 27 metres east of the western building line of Unit C Millbrook Road in a westerly direction for a distance of 17 metres
- c) from a point 35.5 metres east of its junction with Wellington Drive to a point 17 metres west of the junction with Lawrence Drive

**UNNAMED ACCESS ROAD TO SGC BADMINTON ROAD OFFICES, Yate**

- both sides - from its junction with A432 Badminton Road in a northerly direction to and including its northernmost closed end but excluding, on the east side, that length which extends from its closed end in a southerly direction for 5 metres and, on the west side, that length which extends from its closed end in a southerly direction for 30 metres



**WAVERLEY ROAD, Yate**

- north west side -
- a) from its junction with Yate Road in a north easterly direction for a distance of 96 metres
  - b) from a point 183.15 metres north east of its junction with Yate Road in a north easterly direction for a distance of 20 metres
  - c) from a point 19 metres north east of the junction with Lawrence Drive in a south westerly direction for a distance of 113 metres
  - d) from a point 56.4 metres north east of the junction with Lawrence Drive in a north easterly direction for a distance of 33.5 metres
- south east side - from its junction with Yate Road in a north easterly direction to a point 75.1 metres north east of its junction with Lawrence Drive

**WELLINGTON DRIVE, Yate**

- east side - from its junction with Millbrook Road in a southerly direction for a distance of 90 metres
- west side -
- a) from its junction with Millbrook Road in a southerly direction for a distance of 36.5 metres
  - b) from a point 54.5 metres south of its junction with Millbrook Road in a southerly direction for a distance of 26 metres

**SCHEDULE 2****"KENDALL CLOSE, Yate**

- both sides - from its junction with Culvert Avenue in an easterly direction for a distance of 122 metres including all sides of the spur road at its eastern end but excluding the length on the south side that extends from a point 8 metres west of the junction with Walker Close in an easterly direction for a distance of 35 metres "

**SCHEDULE 3**

"

**SCHEDULE 3A**No Waiting, 9 a.m. to 11 a.m., Monday to Friday (inclusive) (see article 5A)**WESTLEIGH CLOSE, Yate**

- south and west side - from its easternmost closed end in a westerly direction for a distance of 72.5 metres "

#### **SCHEDULE 4**

#### **SCHEDULE 5**

##### **Part I**

Limited Waiting, 8.00 a.m. to 6.00 p.m., Monday to Friday (inclusive), two hours – no return within two hours (See Article 7)

#### **CULVERT AVENUE, Yate**

west side - from a point 39.3 metres north west of its junction with Kendall Close / Woodward Avenue Roundabout in a northerly direction to a point 47 metres north of its junction with the Kendall Close/Woodward Avenue roundabout

#### **HIGH STREET, Chipping Sodbury**

north side - a) from a point 27 metres west of its junction with Wickwar Road in a north westerly direction to a point 95 metres west of its junction with Wickwar Road.

b) from a point 101 metres west of its junction with Wickwar Road to a point 108 metres west of its junction with Wickwar Road

#### **LAY-BY ALONG PROPERTY "THE BEECH HOUSE" OFF B4059 YATE ROAD, Yate**

west side - from its junction with Hope Road in a southerly direction for a distance of 21 metres

#### **UNNAMED ACCESS ROAD TO PROPERTY "THE OLD FORGE" OFF B4059 YATE ROAD/STOVER ROAD, Yate**

west side - from its junction with B4059 Yate Road in a northerly direction for a distance of 52 metres

##### **Part II**

Limited Waiting, 8.00 a.m. to 6.00 p.m., Monday to Friday (inclusive), two hours – no return within two hours (except for permit holders) (See Article 7 and Article 11)

#### **CULVERT AVENUE, Yate**

west side - from a point 63 metres north west of its junction with Kendall Close / Woodward Avenue Roundabout in a northerly direction to a point 35 metres south of its junction with the A432 Badminton Road "



## **SCHEDULE 5**

“

### **SCHEDULE 5C**

Limited Waiting, 9 a.m. to 5 p.m., Monday to Friday (inclusive), 2 hours - no return within 4 hours (see Article 7C)

#### **UNNAMED ACCESS ROAD TO SGC BADMINTON ROAD OFFICES, Yate**

east side - from its northernmost closed end in a southerly direction for a distance of 5 metres

west side - from its northernmost closed end in a southerly direction for a distance of 30 metres

### **SCHEDULE 5D**

Limited Waiting, 9 a.m. to 5 p.m., Monday to Friday (inclusive), 4 hours - no return within 4 hours (see Article 7D)

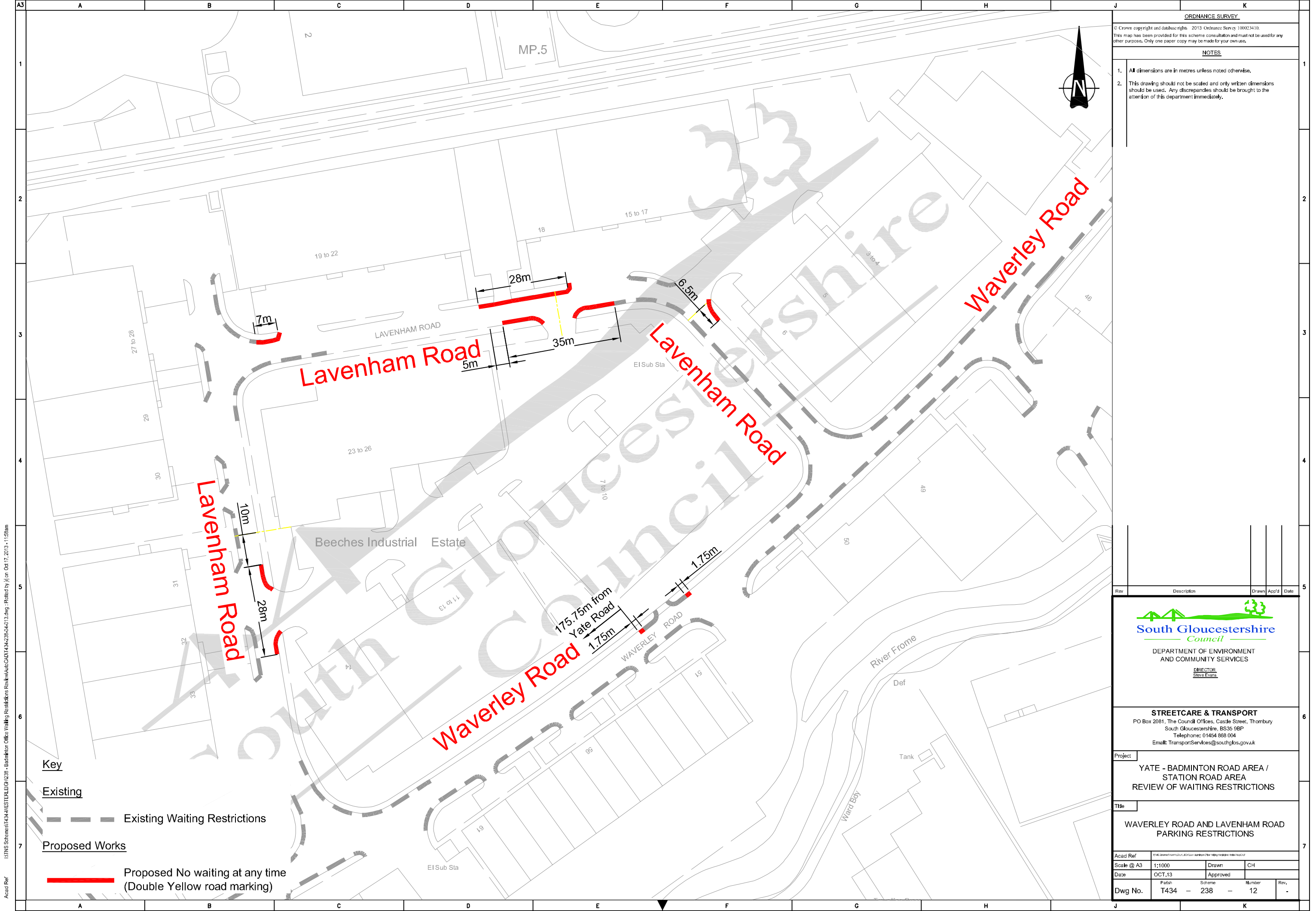
#### **MILLBROOK ROAD, Yate**

north side - from a point 17 metres west of its junction with Lawrence Drive in a westerly thence northerly direction for a distance of 59 metres

#### **NORTH ROAD, Yate**

- east side -
- a) from a point 16 metres south east of the junction with Millbrook Road in a southerly direction for a distance of 67 metres
  - b) from a point 94 metres south east of the junction with Millbrook Road in a southerly direction for a distance of 25.3 metres “






ORDNANCE SURVEY  
© Crown copyright and database rights 2013 Ordnance Survey 100023410.  
This map has been provided for this scheme consultation and must not be used for any other purpose. Only one paper copy may be made for your own use.

**NOTES**

1. All dimensions are in metres unless noted otherwise.

2. This drawing should not be scaled and only written dimensions should be used. Any discrepancies should be brought to the attention of this department immediately.

Rev	Description	Drawn	App'd	Date



**South Gloucestershire Council**

DEPARTMENT OF ENVIRONMENT  
AND COMMUNITY SERVICES

DIRECTOR  
Steve Evans

**STREETCARE & TRANSPORT**

PO Box 2081, The Council Offices, Castle Street, Thornbury  
South Gloucestershire, BS35 9BP  
Telephone: 01454 888 004  
Email: TransportServices@southglos.gov.uk

Project

YATE - BADMINTON ROAD AREA /  
STATION ROAD AREA  
REVIEW OF WAITING RESTRICTIONS

Title

WAVERLEY ROAD AND LAVENHAM ROAD  
PARKING RESTRICTIONS

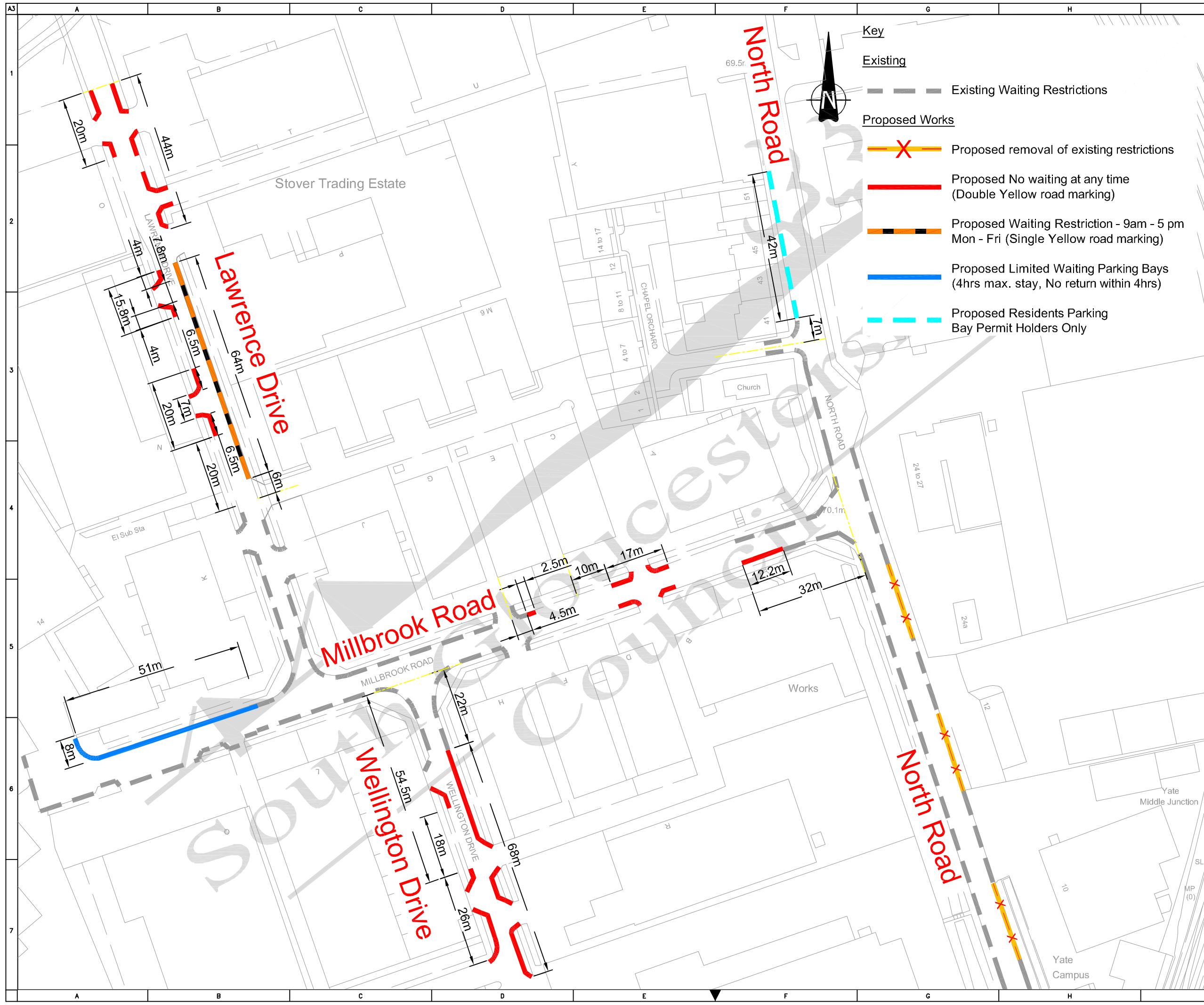
Acad Ref	T434 - YATE - BADMINTON ROAD AREA / STATION ROAD AREA REVIEW OF WAITING RESTRICTIONS		
Scale @ A3	1:1000	Drawn	CH
Date	OCT.13	Approved	
Dwg No.	Parish T434 - Scheme 238 - Number 12	Rev.	-

Acad Ref

13TWS Schemes\T434-YATE-BADMINTON ROAD AREA - Station Road Area - Review of Waiting Restrictions Review\AutoCAD\T434-238-64-013.dwg : Plotted by jll on Oct 17, 2013 - 11:58am



Acad Ref: I:\TWS Schemes\T434-NORTHGLOUCESTER\GIS\238 - Badminton Office Waiting Restrictions Review\AutoCAD\T434-238-04-013.dwg; Plotted by: jll on Oct 17, 2013 - 11:57am



**Key**

**Existing**

Existing Waiting Restrictions

**Proposed Works**

- Proposed removal of existing restrictions
- Proposed No waiting at any time (Double Yellow road marking)
- Proposed Waiting Restriction - 9am - 5 pm Mon - Fri (Single Yellow road marking)
- Proposed Limited Waiting Parking Bays (4hrs max. stay, No return within 4hrs)
- Proposed Residents Parking Bay Permit Holders Only

**ORDNANCE SURVEY**

© Crown copyright and database rights. 2013 Ordnance Survey 100023410.  
This map has been provided for this scheme consultation and must not be used for any other purpose. Only one paper copy may be made for your own use.

**NOTES**

- All dimensions are in metres unless noted otherwise.
- This drawing should not be scaled and only written dimensions should be used. Any discrepancies should be brought to the attention of this department immediately.

Rev	Description	Drawn	App'd	Date

**South Gloucestershire Council**

DEPARTMENT OF ENVIRONMENT AND COMMUNITY SERVICES

**DIRECTOR**  
Steve Evans

**STREETCARE & TRANSPORT**  
PO Box 2081, The Council Offices, Castle Street, Thornbury  
South Gloucestershire, BS35 9BP  
Telephone: 01454 868 004  
Email: TransportServices@southglos.gov.uk

**Project**  
YATE - BADMINTON ROAD AREA / STATION ROAD AREA  
REVIEW OF WAITING RESTRICTIONS

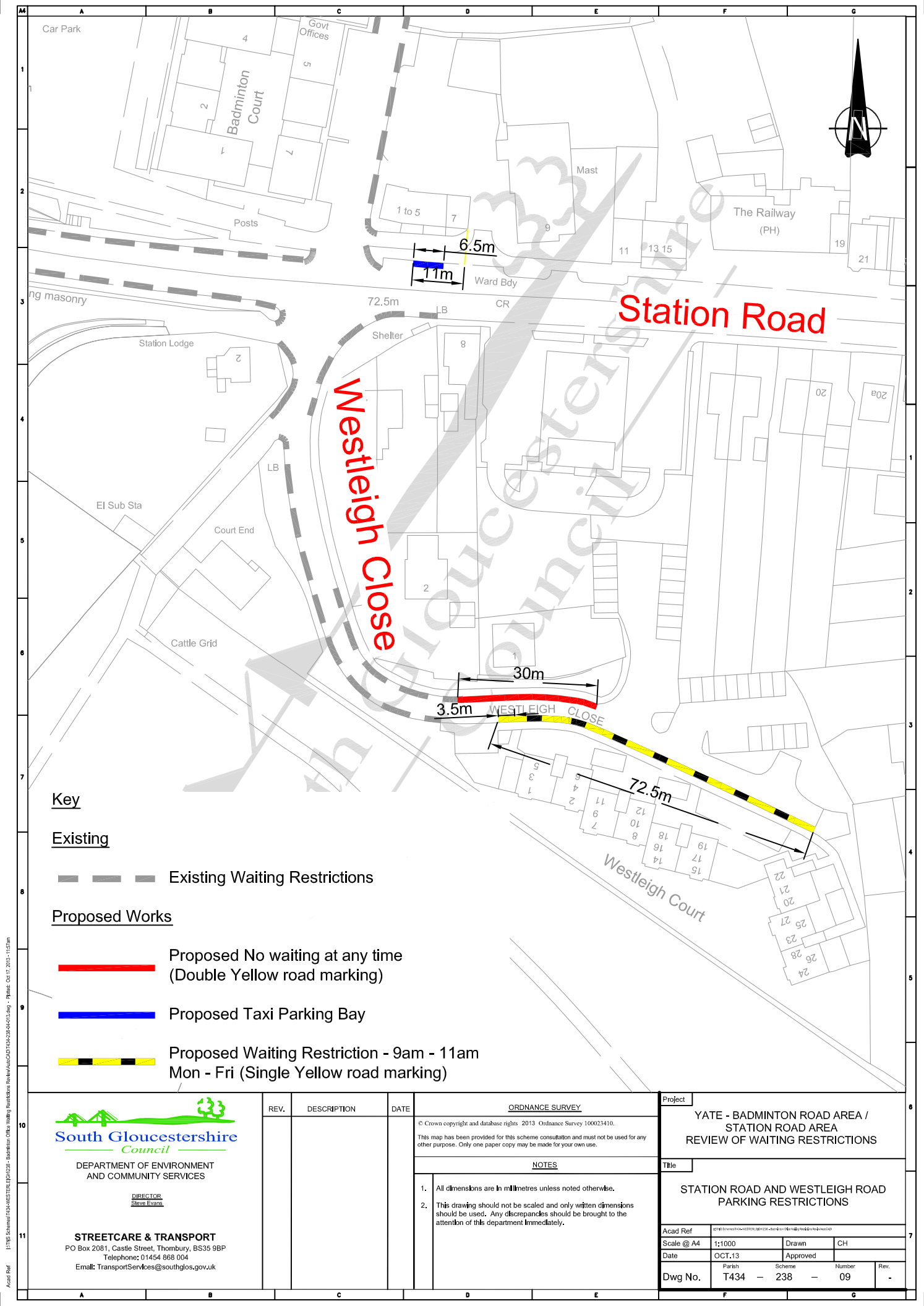
**Title**  
NORTH ROAD, MILLBROOK ROAD  
WELLINGTON DRIVE AND LAWRENCE DRIVE  
PARKING RESTRICTIONS

Acad Ref	I:\TWS Schemes\T434-NORTHGLOUCESTER\GIS\238 - Badminton Office Waiting Restrictions Review\AutoCAD\T434-238-04-013.dwg		
Scale @ A3	1:1000	Drawn	CH
Date	OCT.13	Approved	
Dwg No.	T434 - 238	Number	11
		Rev.	









**Key**

**Existing**

Existing Waiting Restrictions

**Proposed Works**

Proposed No waiting at any time  
(Double Yellow road marking)

Proposed Taxi Parking Bay

Proposed Waiting Restriction - 9am - 11am  
Mon - Fri (Single Yellow road marking)



DEPARTMENT OF ENVIRONMENT  
AND COMMUNITY SERVICES

DIRECTOR  
Steve Evans

**STREETCARE & TRANSPORT**  
PO Box 2081, Castle Street, Thornbury, BS35 9BP  
Telephone: 01454 868 004  
Email: TransportServices@southglos.gov.uk

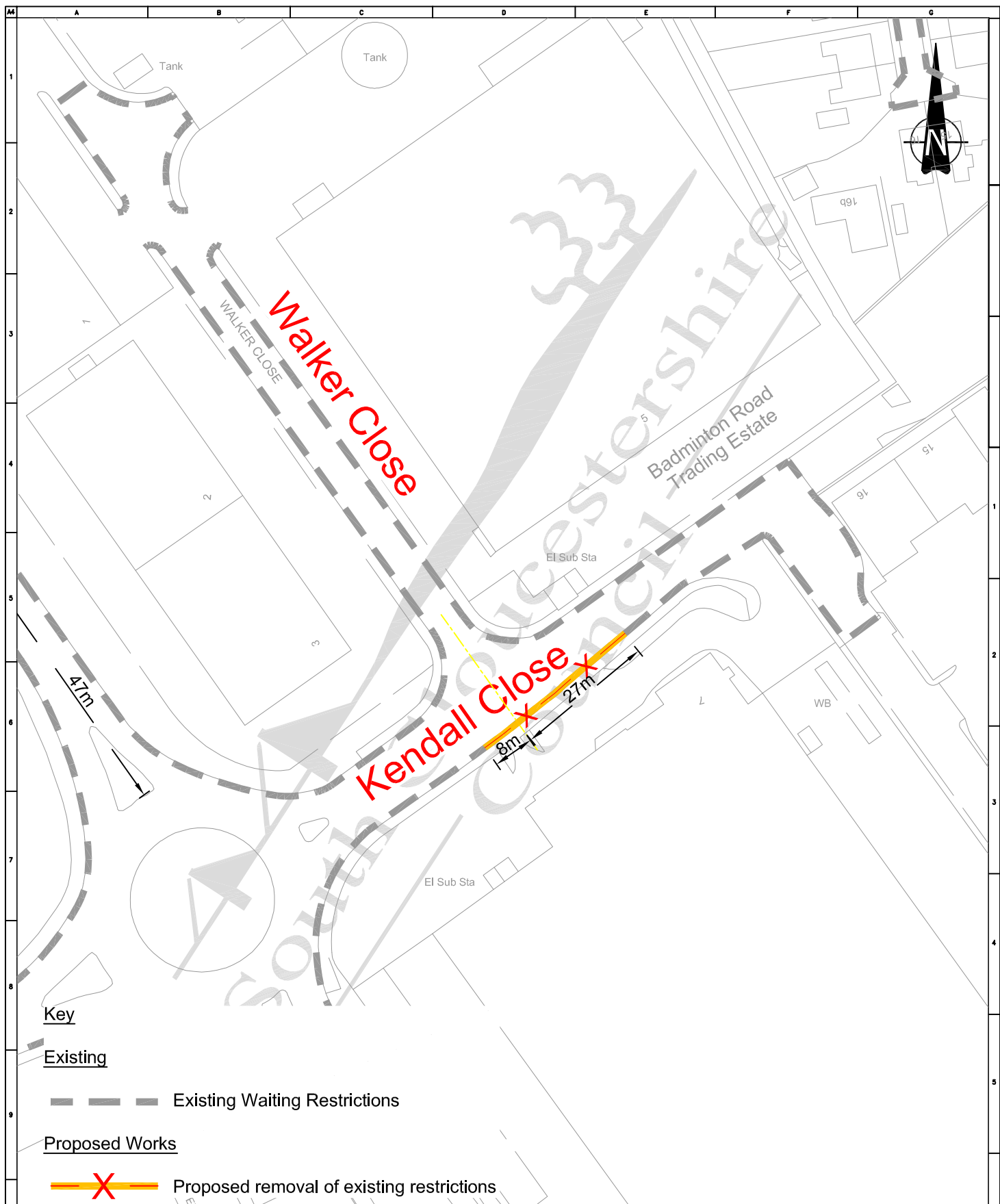
REV.	DESCRIPTION	DATE


ORDNANCE SURVEY	
© Crown copyright and database rights. 2013 Ordnance Survey 100023410. This map has been provided for this scheme consultation and must not be used for any other purpose. Only one paper copy may be made for your own use.	
NOTES	
1. All dimensions are in millimetres unless noted otherwise. 2. This drawing should not be scaled and only written dimensions should be used. Any discrepancies should be brought to the attention of this department immediately.	

Project	
YATE - BADMINTON ROAD AREA / STATION ROAD AREA REVIEW OF WAITING RESTRICTIONS	
Title	
STATION ROAD AND WESTLEIGH ROAD PARKING RESTRICTIONS	
Acad Ref	WWW.SOUTHGLOS.GOV.UK/TRANSPORT/STREETCARE/STATIONROAD
Scale @ A4	1:1000
Drawn	CH
Date	OCT.13
Approved	
Dwg No.	Parish Scheme Number Rev. T434 - 238 - 09 -



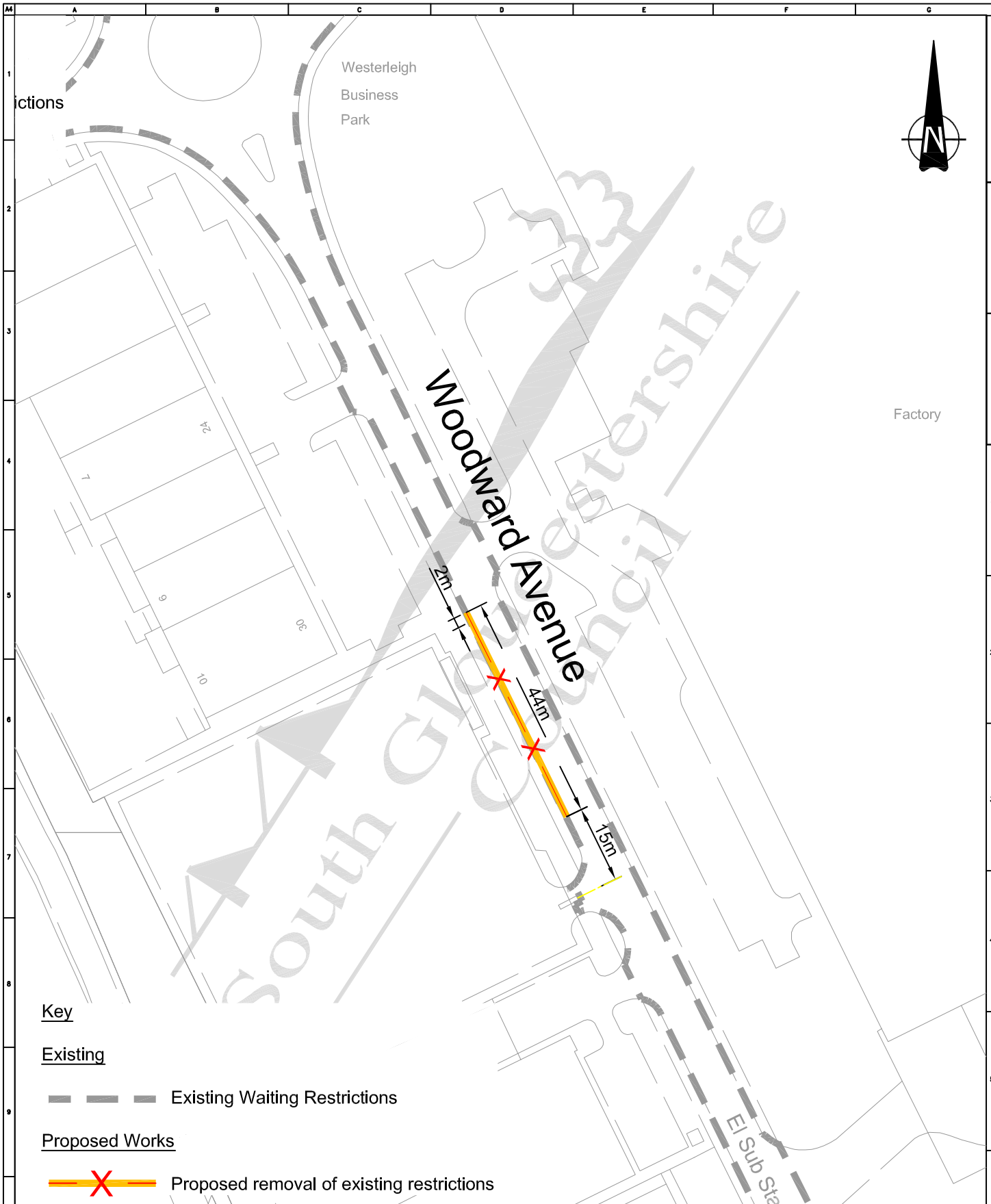




10	 <b>South Gloucestershire</b> <i>Council</i>  DEPARTMENT OF ENVIRONMENT AND COMMUNITY SERVICES  <u>DIRECTOR</u> <u>Steve Evans</u>  <b>STREETCARE &amp; TRANSPORT</b> PO Box 2081, Castle Street, Thornbury, BS35 9BP Telephone: 01454 868 004 Email: TransportServices@southglos.gov.uk	REV.	DESCRIPTION	DATE	<u>ORDNANCE SURVEY</u>  © Crown copyright and database rights 2013 Ordnance Survey 100023410.  This map has been provided for this scheme consultation and must not be used for any other purpose. Only one paper copy may be made for your own use.	Project	YATE - BADMINGTON ROAD AREA / STATION ROAD AREA REVIEW OF WAITING RESTRICTIONS				6
					<u>NOTES</u>  1. All dimensions are in millimetres unless noted otherwise.  2. This drawing should not be scaled and only written dimensions should be used. Any discrepancies should be brought to the attention of this department immediately.	Title	KENDALL CLOSE PARKING RESTRICTIONS				
11						Acad Ref	01454 Street & High Street, Badmington, Gloucestershire, Gloucestershire, Gloucestershire				7
						Scale @ A4	1:1000	Drawn	CH		
						Date	OCT.13	Approved			
						Dwg No.	Park T434	Scheme — 238	Number — 07	Rev. —	







**Key**

**Existing**

--- Existing Waiting Restrictions

**Proposed Works**

—X— Proposed removal of existing restrictions



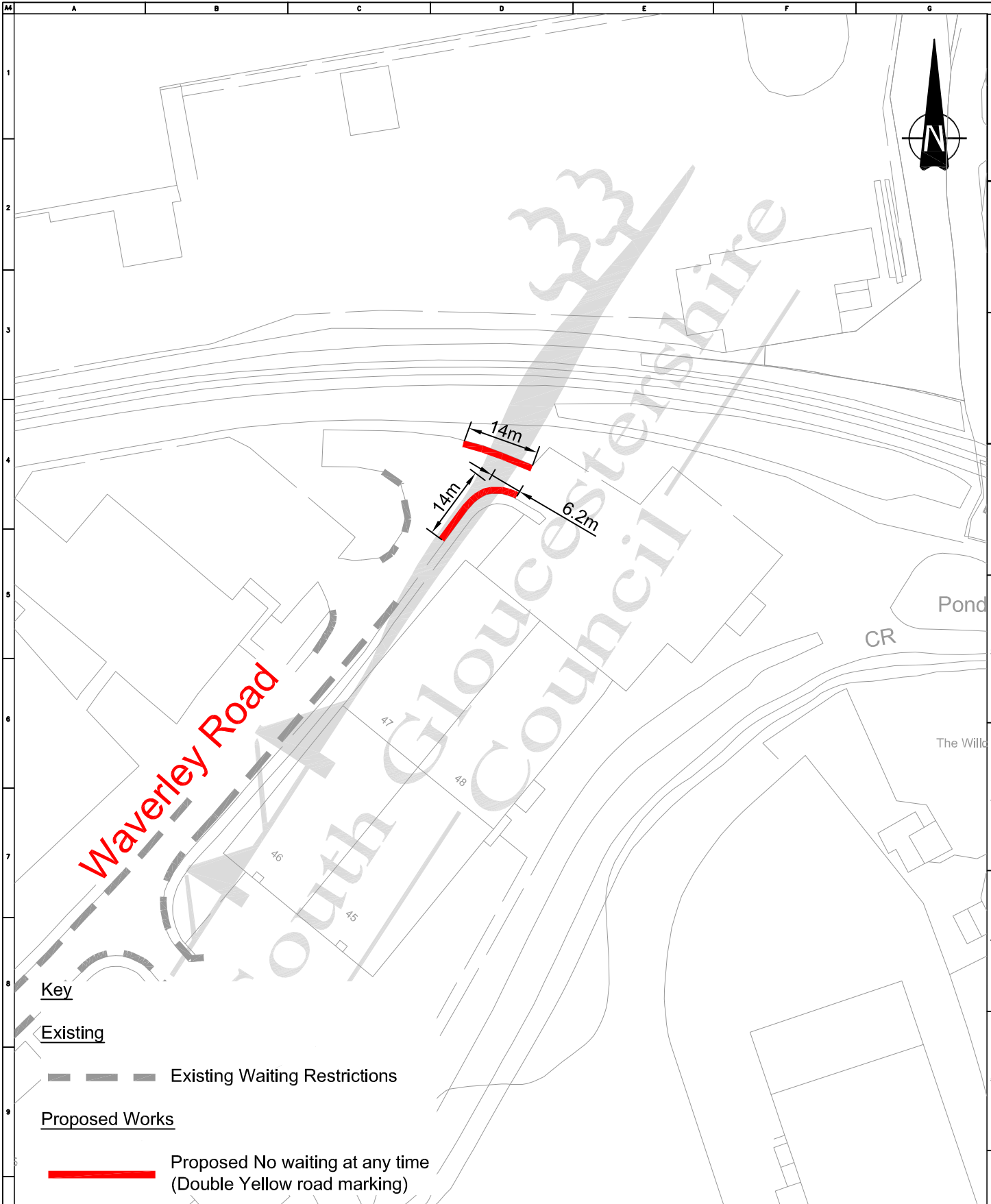
DEPARTMENT OF ENVIRONMENT  
AND COMMUNITY SERVICES

DIRECTOR  
Steve Evans

**STREETCARE & TRANSPORT**  
PO Box 2081, Castle Street, Thornbury, BS35 9BP  
Telephone: 01454 868 004  
Email: TransportServices@southglos.gov.uk

REV.	DESCRIPTION	DATE	ORDNANCE SURVEY
			© Crown copyright and database rights 2013 Ordnance Survey 100023410. This map has been provided for this scheme consultation and must not be used for any other purpose. Only one paper copy may be made for your own use.
NOTES			
1. All dimensions are in millimetres unless noted otherwise.			
2. This drawing should not be scaled and only written dimensions should be used. Any discrepancies should be brought to the attention of this department immediately.			

Project			
YATE - BADMINTON ROAD AREA / STATION ROAD AREA REVIEW OF WAITING RESTRICTIONS			
Title			
WOODARD AVENUE PARKING RESTRICTIONS			
Acad Ref	WWW.SOUTHGLOS.GOV.UK/TRANSPORT/STREETCARE/STATIONROAD		
Scale @ A4	1:1000	Drawn	CH
Date	OCT.13	Approved	
Dwg No.	Parish T434	Scheme Number 238	Rev. 05



Key

Existing

Existing Waiting Restrictions

Proposed Works

Proposed No waiting at any time  
(Double Yellow road marking)



DEPARTMENT OF ENVIRONMENT  
AND COMMUNITY SERVICES

DIRECTOR  
Steve Evans

**STREETCARE & TRANSPORT**  
PO Box 2081, Castle Street, Thornbury, BS35 9BP  
Telephone: 01454 868 004  
Email: TransportServices@southglos.gov.uk

REV.	DESCRIPTION	DATE

ORDNANCE SURVEY	
© Crown copyright and database rights 2013 Ordnance Survey 100023410. This map has been provided for this scheme consultation and must not be used for any other purpose. Only one paper copy may be made for your own use.	
NOTES	
1. All dimensions are in millimetres unless noted otherwise. 2. This drawing should not be scaled and only written dimensions should be used. Any discrepancies should be brought to the attention of this department immediately.	

Project	YATE - BADMINTON ROAD AREA / STATION ROAD AREA REVIEW OF WAITING RESTRICTIONS		
Title	WAVERLEY ROAD PARKING RESTRICTIONS		
Acad Ref	www.southglos.gov.uk/transport/roadworks		
Scale @ A4	1:1000	Drawn	CH
Date	OCT,13	Approved	
Dwg No.	Parish T434	Scheme 238	Number 13
			Rev. -